

Best Practices for 1 Year Follow-Up Survey Collection



Providers speak to the patient at their visits regarding MBSC and discuss the importance of participation and filling out the surveys



In-Person 1 Year follow-up Visit



Calling the Patient



Having survey in digital format to send within EHR (must have IT support)

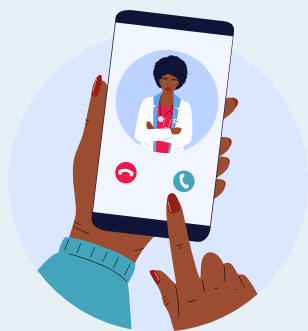
Adding Survey to 1 year appointment notes



Run MBSC reports frequently and communicate missing surveys



Complete the survey virtually at a 9-month or 15-month visit if missed



Mail questionnaires with return envelope

